

# 3 Questions on FNA sampling

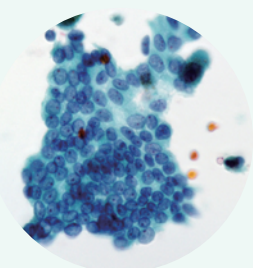
- Q. Are you sure that target cells obtained enough?
- Q. Are there any problems with cell degeneration, or blood obscured?
- Q. Are you aware that sampling has the most impact on diagnostic results?

If you have Yes ! or Maybe ?  
on even one question, it's worth a try.

## MR preservation No.5 — Cell preservation solution for PAP staining —

- Anti-gelation eliminates the need for pretreatment in bloody material.
- Hemolytic and Protein solubilizing effect make the cells clearer.
- Reduces the cell shrinkage that tends to occur in LBC, resulting in a cell image similar to conventional methods.

Papanicolaou stained image



Thyroid:  
papillary carcinoma  
(ground glass nuclear  
chromatin, intranuclear  
cytoplasmic inclusions,  
nuclear grooves)

Macro image using  
other preservation solution



Blood gelation (+)

Macro image using  
MR preservation solution No.5



Blood gelation(-)

**MOBILE ROSE** Contact

Contact by E-mail  
contact@yamachutech.com

MOBILE ROSE Official site  
https://yamachutech.com



## Multi-functional Microscope MOBILE ROSE

| Specification  |                               |                      |                           |
|--|-------------------------------|----------------------|---------------------------|
| Specially controlled medical devices 12B2X10031000001 Class II |                               |                      |                           |
| External dimensions  | 229 × 265 × 224 (W × D × Hmm) | Power supply         | INPUT: AC 90-240V 50/60Hz |
| Installation dimensions  | 250 × 300 × 250 (W × D × Hmm) | Power consumption    | up to 4.5W                |
| Weight   | about 3kg                     | Safety certification | PSE CE                    |

### Accessories

Instruction manual , Body cover , Power cord \* Smartphone is not included

### Accessories Consumables

#### Identification funnel

1 set (50pcs)



#### Sample container with View Cap (Centrifuge tube type)

1 set (13ml × 50pcs)



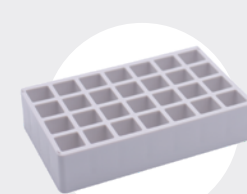
#### MR preservation solution No.5 (for Papanicolaou staining)

250ml / 500ml  
Available for purchase in quantities of one bottle



#### TM holder

1 pc (28holes)



\* All images in this brochure are for reference only. Please note that the observed image may differ depending on the smartphone camera application.  
\* The descriptions are as the time of release, and may change without notice.

Company Profile

yamachu Yamachu Co., Ltd.

http://www.yamachucosmetics.com

Address 〒292-0838 1-17-16 Shiohama Kisaradu ,Chiba, JAPAN

Multi-functional integrated microscope

**MOBILE ROSE** —microscope—

• May 2021 Start of sales

Customer service

+81-438-37-6193

(Excluding weekends, holidays, and yearend and New year holidays)

Reception time 10:00~12:00 / 13:00~17:00

Email : contact@yamachutech.com

For countries other than Japan, we recommend contacting us by e-mail.

Catalog No. MR211001EN

Copyright©2020 Yamachu Co.,Ltd. All right reserved

Yamachu Inc. October 2021



Innovation for FNA (International Patented)

# Visualization of cells in a storage container

Open a new ERA for ROSE (Rapid On Site Evaluation)



Specially controlled medical devices

Multi-functional integrated microscope

**MOBILE ROSE**  
—microscope—

New product information  
https://yamachutech.com

# Features and Advantages of MOBILE ROSE

## Advantage.1

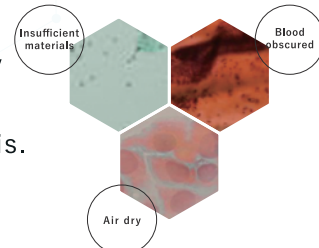
### One minutes Rapid On Site Evaluation (ROSE)

By simply inserting the specimen container into the observation holder, collected cells can be observed, allowing the physician to conduct proper evaluation rapidly.

## Advantage.2

### Reduction of major sampling errors (Air dry, Blood obscured, Insufficient materials)

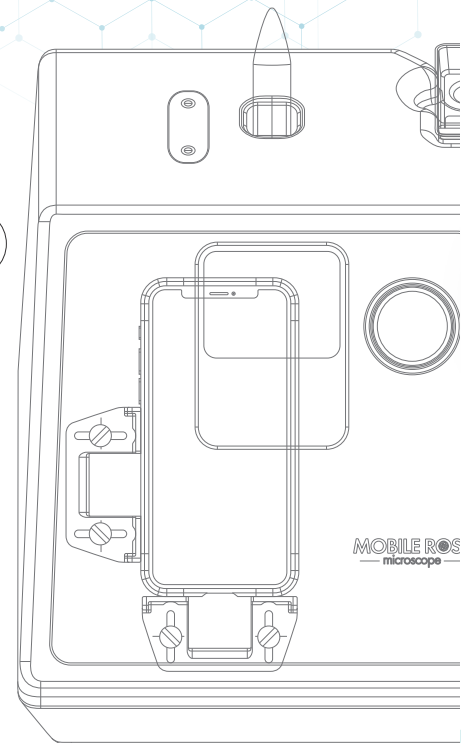
It improves diagnostic accuracy by preventing air-dry artifact, blood obscured, and insufficient cell collection, which can cause undeterminable or misdiagnosis.



## Advantage.3

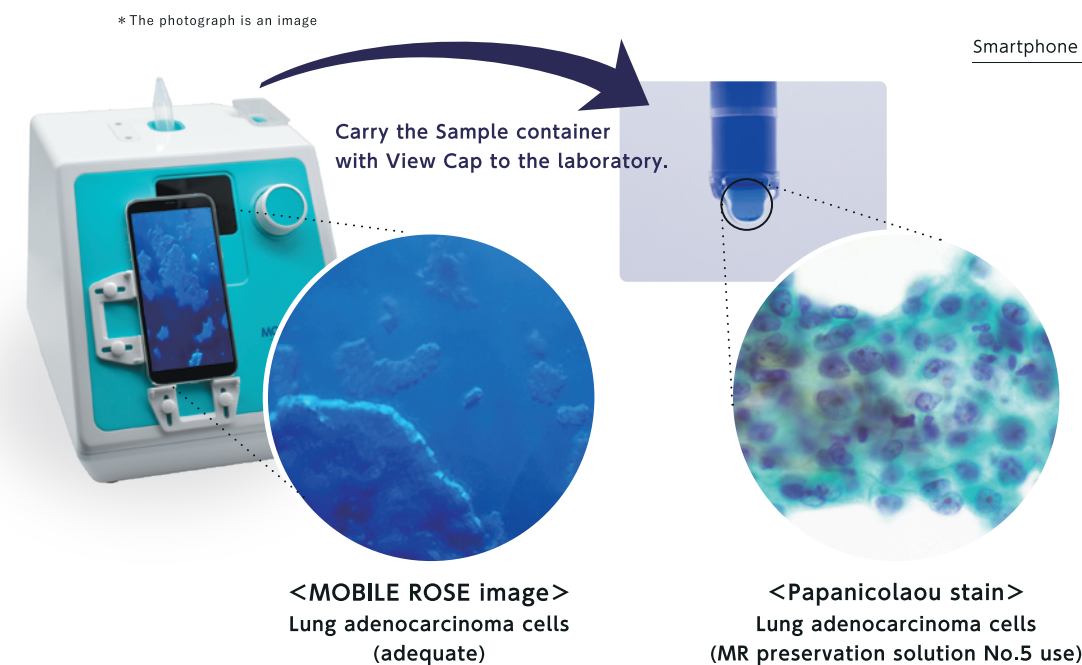
### The observation instrument is also used as a specimen container to be transported to the laboratory.

The design of Mobile Rose with an efficient flow line enables collecting LBC samples easily, and on - site evaluation of specimen adequacy contributes higher accuracy of diagnosis. The Sample container with View Cap can be labeled and directly carry into the laboratory for Cyto-diagnosis after ROSE procedure.



## Easy and simple operation contributes ROSE procedure

All cells observed will be smeared on the specimen in the laboratory

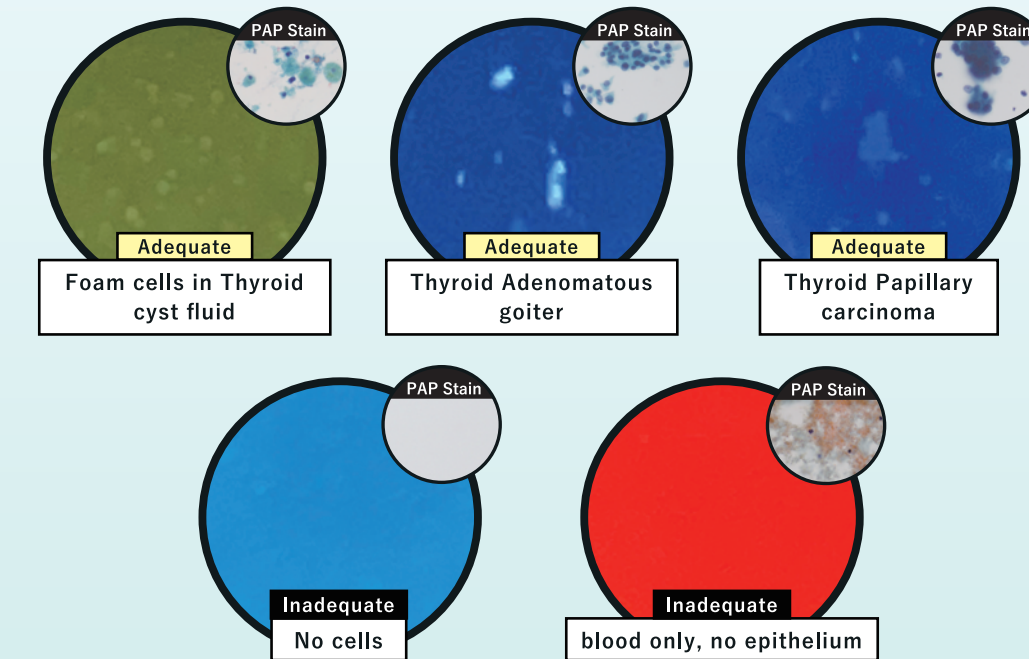


**1 minute operation for ROSE!**



## Reduction of major sampling errors

Reducing the air dry artifact, blood obscured and Insufficient number of cells that frequently occur during sampling contributes to decrease the rate of unsatisfactory, false positive, and false negative results



\* All images are for reference only. Please note that the observed image may differ depending on the smartphone display.

## How to operate MOBILE ROSE



## Advantage.4

### All in One Microscope system dedicate to ROSE \*1 procedure

Cytology sample can be easily separated through CNB and needle washing which contribute to improve cell collection rate. After collection, the Sample container with View Cap can be turned upside down and inserted into the observation holder to observe the presence of collected cells.

\*1 ROSE (Rapid On Site Evaluation)

## Advantage.5

### Compact and Lightweight device, Image and Save with smartphone

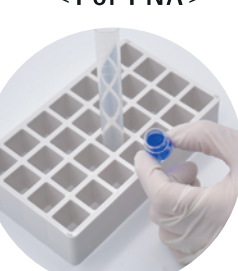
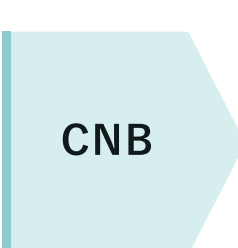
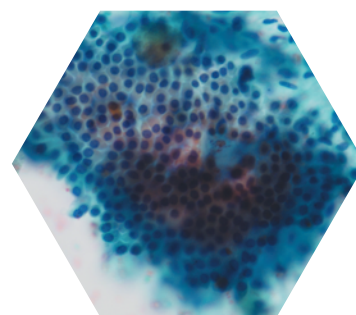
Images can be captured and saved with a smartphone camera application. It is handy and does not take up much space of about 25cm square. The saved images are useful for later comparison with cytology results.

## Advantage.6

### MR preservation solution No.5 \*2 (Hereinafter referred to as MR preservation solution)

MR preservation solution has the ability to prevent blood gelation and protein solubilization. Cells in the MR preservation solution without shrinkage look similar to the PAP stained image of the conventional method.

\*2 Only Papanicolaou staining is recommended

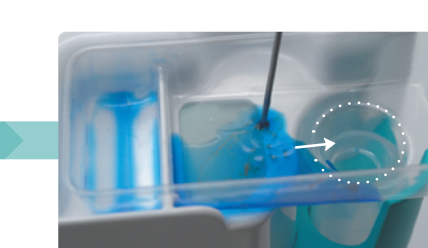


## STEP.1



After FNA, push out the materials into an identification area of the funnel. Pick up the tissue with tweezers or filter paper and place them in a formalin container.

## STEP.2



Aspirate MR preservation solution into a syringe and pour it into the centrifuge tube with the remaining material to flush out the inside of the funnel.

## STEP.3



Attach the View Cap to the centrifuge tube and set it into the observation holder.

## STEP.4



Confirm existence of cells on the smartphone display. If cells were collected, remove the Sample container with View Cap and carry it to the laboratory.

**Cytology Test**  
In the laboratory, after centrifugation, the sediment can be prepared as a usual liquid specimen spray fixative, cell collection method, LBC method, etc.

**ONLY 4 STEPS, 1 minute operation for ROSE**