

Fine Needle Aspiration ~INNOVATION~ Cytology
ROSE(Rapid on site evaluation) by Clinician or Technologist

Multifunctional integrated microscope

Mobile Rose

Three major sampling errors that most affect the accuracy of pathology and cytology tests



Pathology

**Insufficient
tissue for
diagnosis**

**Endoscopic
materials
without
sufficient
tissue**

**Insufficient
cell
component
for diagnosis**

**Cell
component
obscured by
blood**

**Air-drying or
poorly fixed
cells**



Cytology

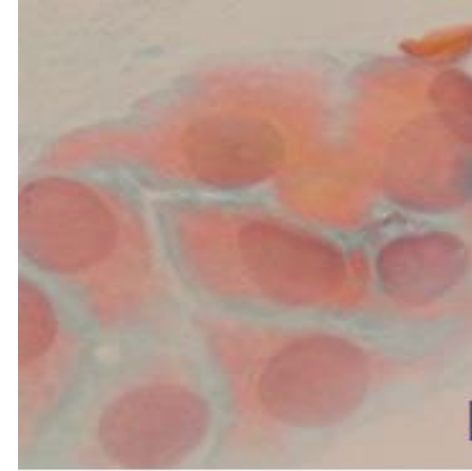
Examples of cell images caused by the three major sampling errors (inadequate specimens)



insufficient cell component
Undetermined

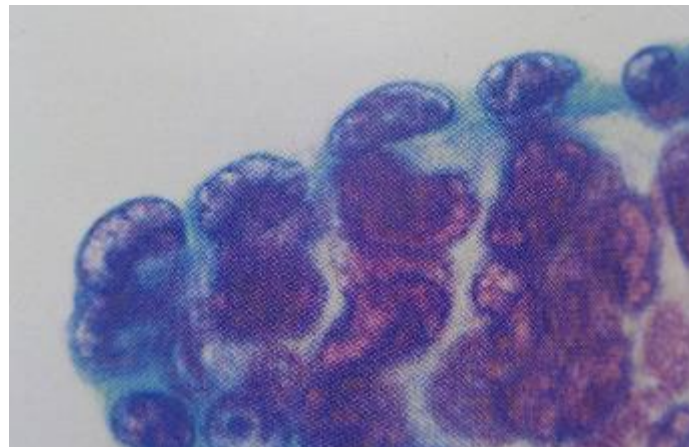


obscured by blood
Difficult to diagnose



air-dried smear
Difficult to diagnose

Appropriate
specimen



Conventional method→LBC method

* L B C (Liquid Base Cytology)

Reduction of three major sampling errors by LBC method

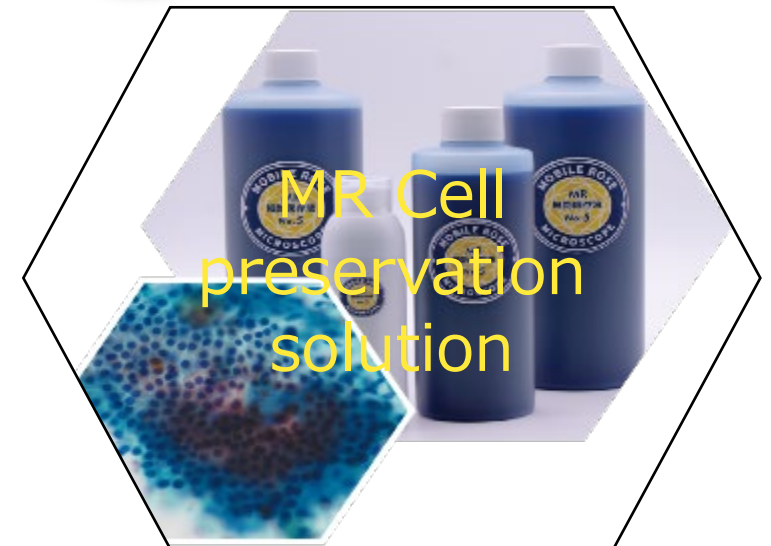
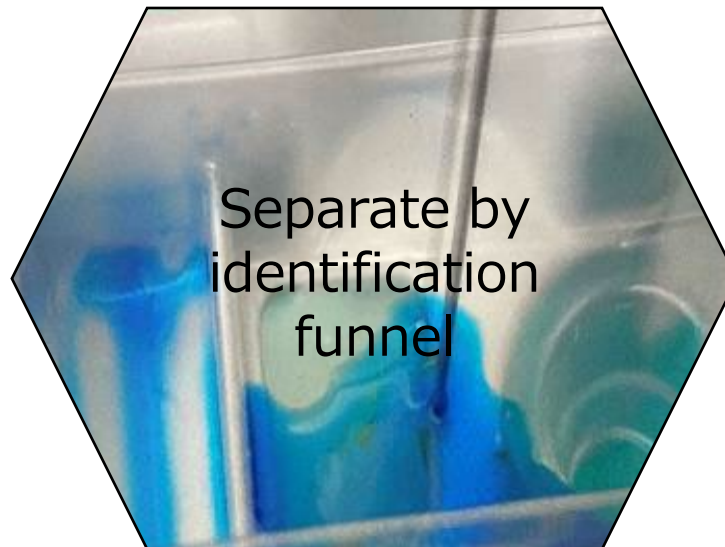
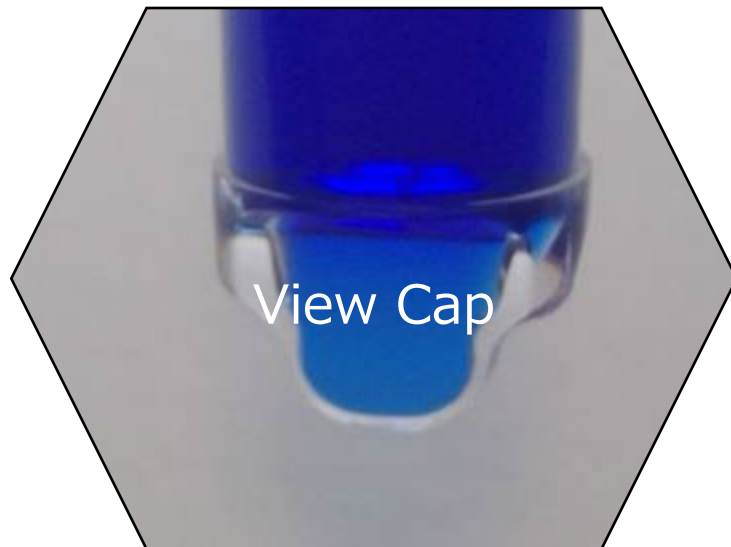
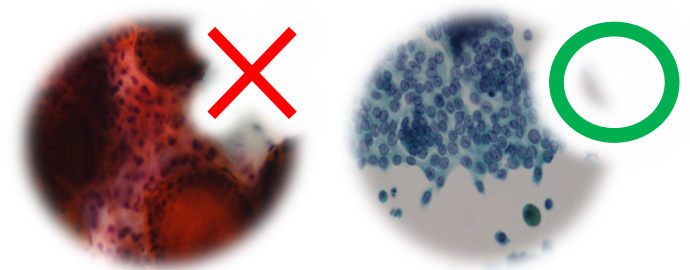
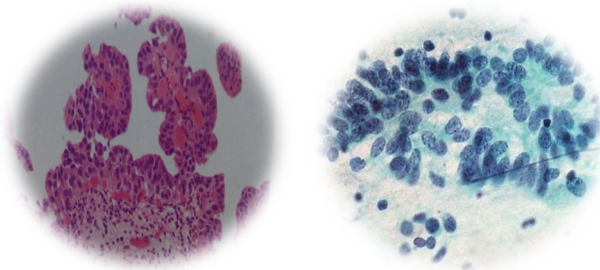
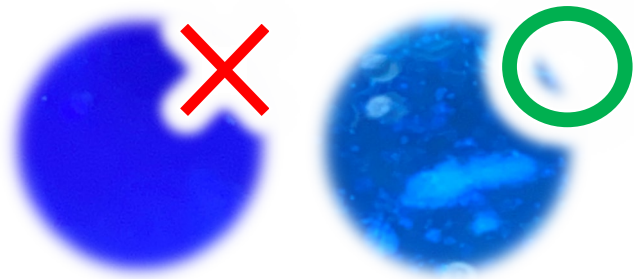
- Collect most of the cells in the syringe
- Hemolysis of blood by MR cell preservation solution
- Prevention of cell degeneration by liquid base sample collection



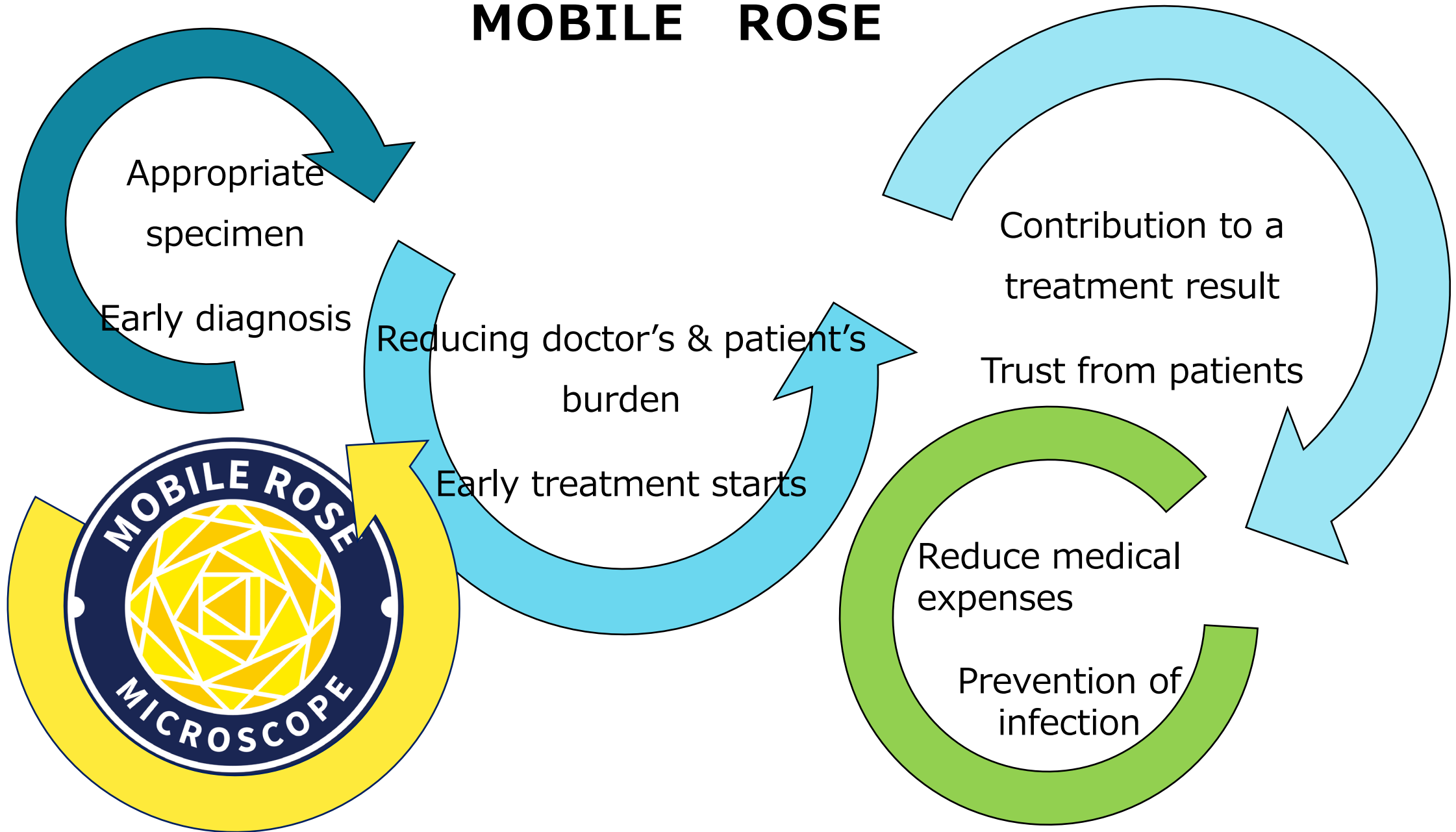
Simple ROSE procedure→Observation of unstained cells in the specimen container (about 1 minute)

■ specimen container with View Cap ■ identification funnel ■ MR Cell preservation solution

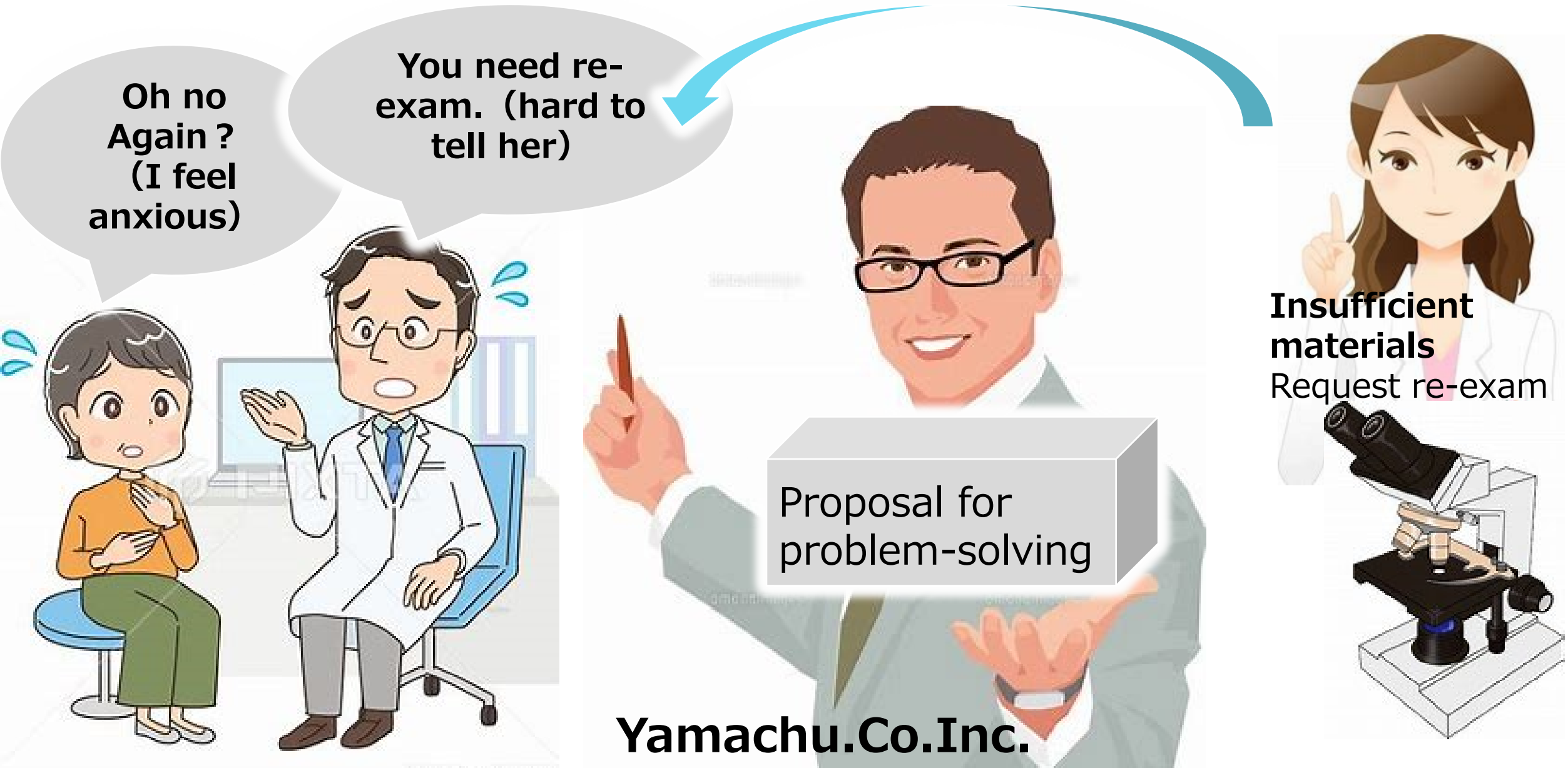
No cells cells present for Pathology for Cytology Bloody Hemolysis



Expected benefits of implementing MOBILE ROSE



Propose shared problem-solving





多機能一体型顕微鏡 モバイルローズ

MOBILE ROSE
—microscope—

How to use Mobile Rose

yamachu



Thank you very much for your attention.



Commit to Diagnosis
MOBILE ROSE



Give&Give
Yamachu Co.Inc.